

Date: 10/4/02

Log #: AN-0252

Lightning Surge Protection

Overview

To adequately protect your central equipment from lightning you must isolate the radio exchange as you would for any customer premise equipment (CPE). Ascom has tested and verified the secondary protection equipment listed in this document. We suggest that you use this equipment to protect the radio exchange from lightning that may come in on the cabling connecting outdoor base stations.

Purchase Information

Ascom does not supply lightning protection equipment. Such equipment must be purchased through a third-party vendor. The suggested models and contact information is provided below for your convenience:

Vendor: Anixter

Items:

- Pico Protector Module

THE SIEMON COMPANY	118801 PM-068	PROTECTOR MODULE PICO PLUGON SOLID STATE FOR 66M BLK 68VDC
-----------------------	------------------	---

- Ground Kit

THE SIEMON COMPANY	118805 PG-25	GROUND KIT 25PR PICO SOLID STATE RETROFIT MOD FOR 66M1-50 BLOCKS
-----------------------	-----------------	---

Contact Info:

<http://www.anixter.com/>

Product Information

The aforementioned protector kit protects voice and data equipment from sneak current and voltage surge that may occur beyond the primary protection devices. This secondary protection should be use in conjunction with a primary protection device such as the Siemon Primary Protection module.

Date: 10/4/02

Log #: AN-0252

The Pico Protector modules and the Pico Protector ground kits are purchased separately.

Configuration Suggestions

To protect the CPE from lightning coming in on the base station cabling you should install a primary protection block where the cable enters the building along with a secondary protection block which is to be mounted close to the equipment. As a minimum, use the secondary Pico Protection system on the base station 66 block(s). Refer to the following figures for configuration guidelines.

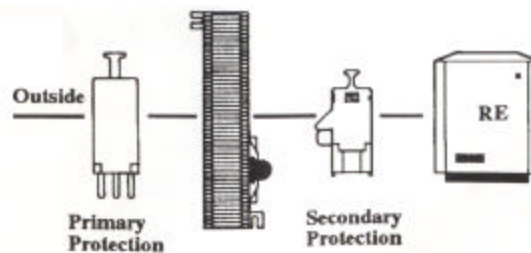


Figure 1

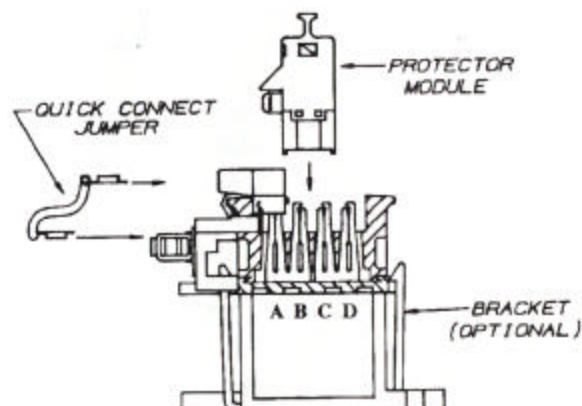


Figure 2

Date: 10/4/02

Log #: AN-0252

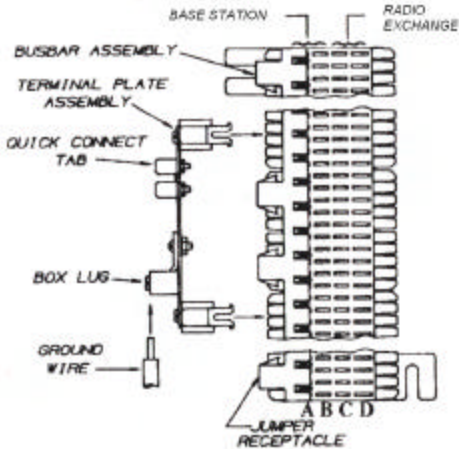


Figure 3

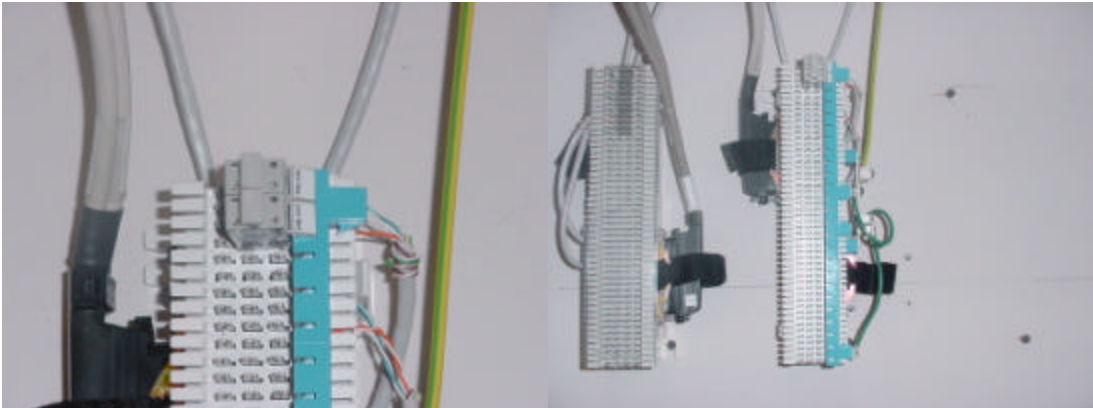


Figure 4