

December 20, 2000

Log #: TS-0006

Inadvertent System Reset

Problem

Inadvertent DCT1900 Standalone and DCT1900 Mobility system resets may occur if Acknowledgement Test is turned on.

Explanation

A fix was introduced for fault in which a base station marked as MFG would not recover without a reset (as when replaced). The fix keys off the periodic Acknowledgement test performed by the CPU. This fixed the Base Station recovery problem without side effects. However, an additional feature, an error message, was introduced which causes the CPU to reset. This problem was introduced in CPU SA Firmware release R2B and was corrected in R3A. The problem was introduced in CPU MS Firmware release R2A and has not been corrected in a current release.

Effected Firmware Releases

The following Firmware releases have may experience the Inadvertent Reset if the proper pre-cautions are not taken:

<u>CPU SA Firmware</u> (RYS 105 447)	<u>CPU MS Firmware</u> (RYS 105 657)
R2C	R3A
P2D	R2B
P2C	P2B
R2B	R2A
P2B	

Correction and Procedure

When possible the CPU Firmware should be replaced with a corrected revision and the system should be re-initialized. A temporary fix is to turn off the periodic Acknowledgement test. Each CPU test may be disabled using the CSM.

In the CSM Distributor Menu

 Select Diagnostics/tests

 Test Time

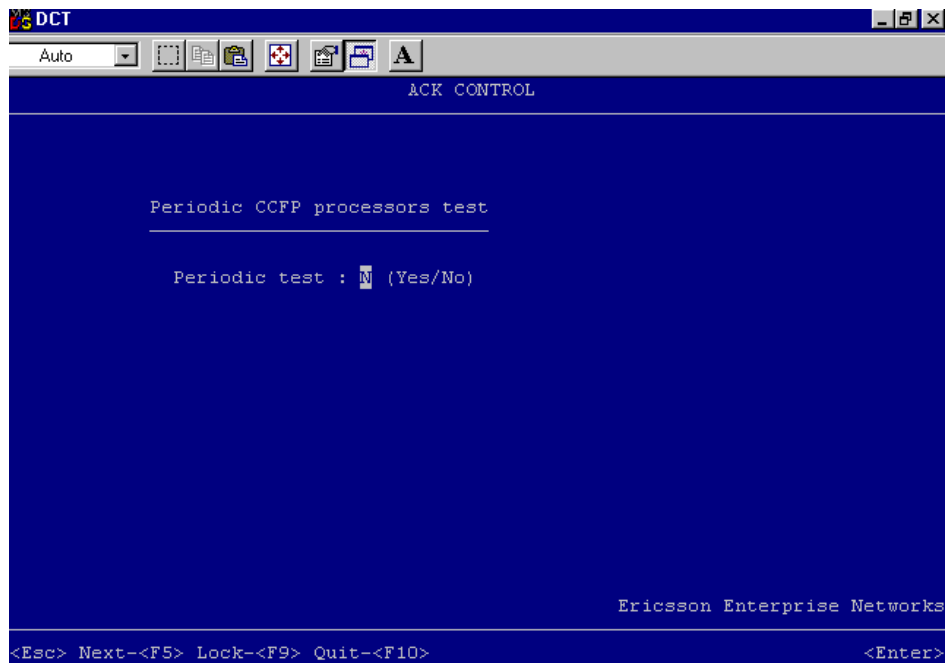
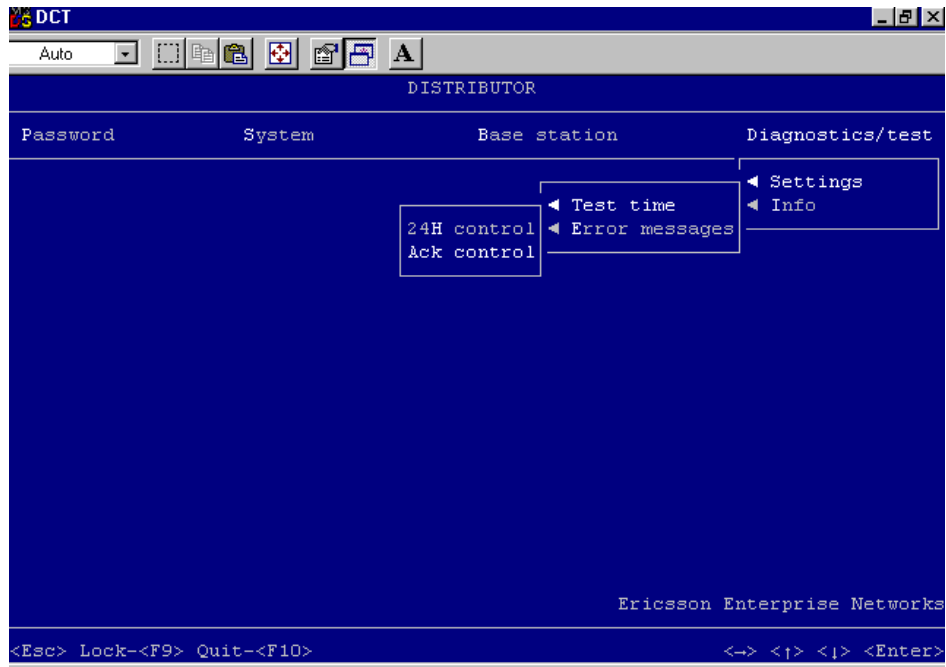
 Ack control

 N (Yes/No)

Please contact Ascom Technical Support (1 877 71ASC0M) if you have any questions.

December 20, 2000

Log #: TS-0006



December 20, 2000

Log #: TS-0006

