

# Service Alert Bulletin

Product: DCT1900 Standalone & Mobility Server  
Purpose: Daylight Savings Time Adjustment  
Date: November 2, 2005

## Daylight Savings Time Adjustment

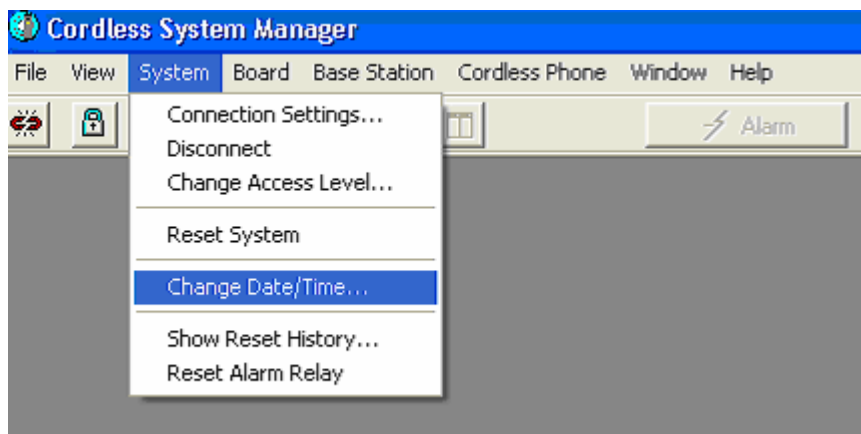
### Overview

Ascom DCT1900 wireless system does not automatically adjust the time when moving to and from daylight savings time. To adjust for daylight savings time, changes must be made in the Radio Exchange. The configuration process is the same with the mobility Server and the stand-alone system. Below are the instructions using the DOS and windows versions of CSM.

### Solution

CSMW:

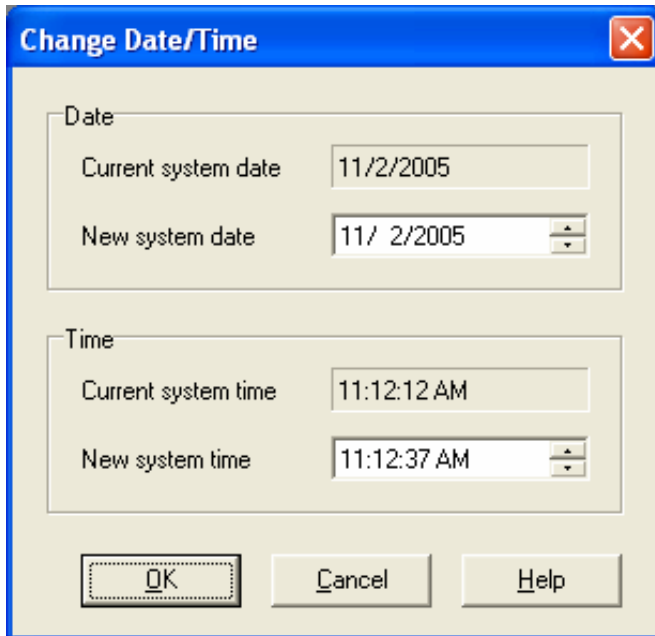
- Log into the Radio Exchange(s)
- Select System in the toolbar
- Select Change Date and Time



- This will pull the correct time from the PC. However, an adjustment maybe necessary.

# Service Alert Bulletin

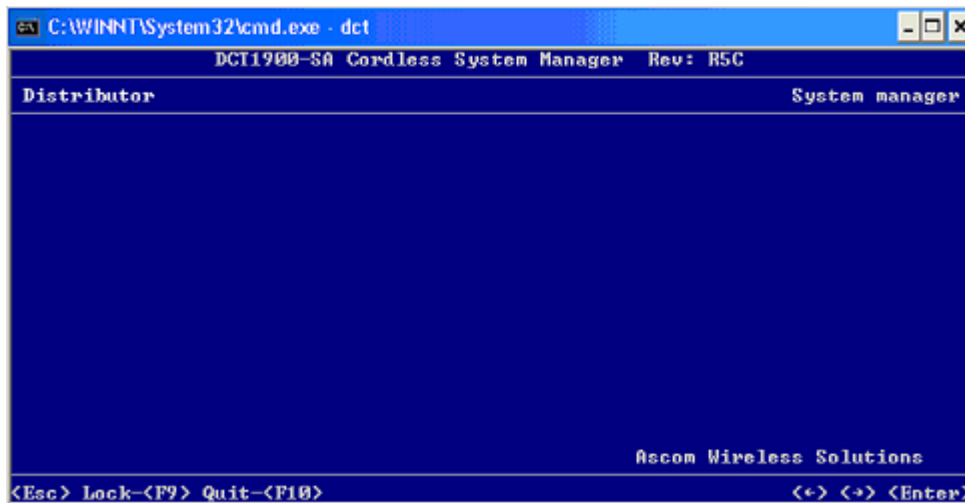
Product: DCT1900 Standalone & Mobility Server  
Purpose: Daylight Savings Time Adjustment  
Date: November 2, 2005



- Click OK

## DOS CSM:

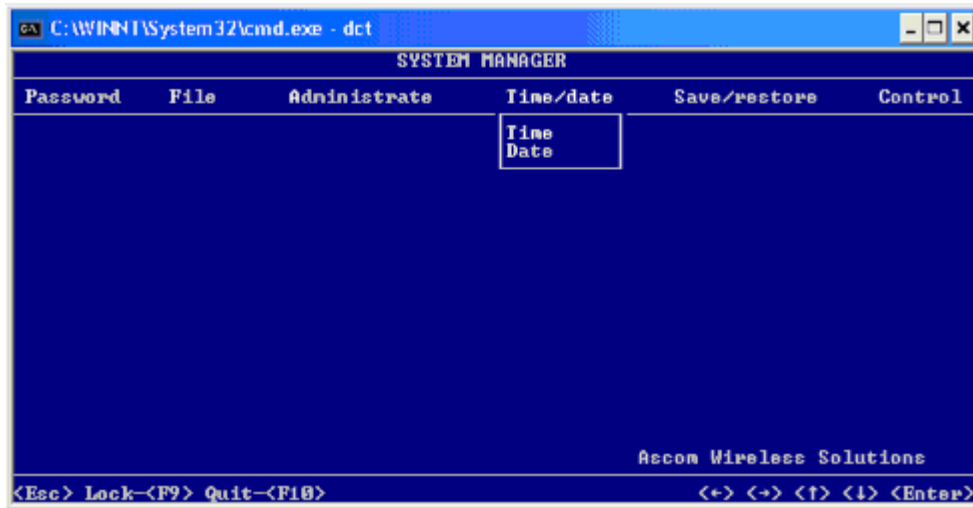
- Log into the Radio Exchange(s)
- Select System Manager



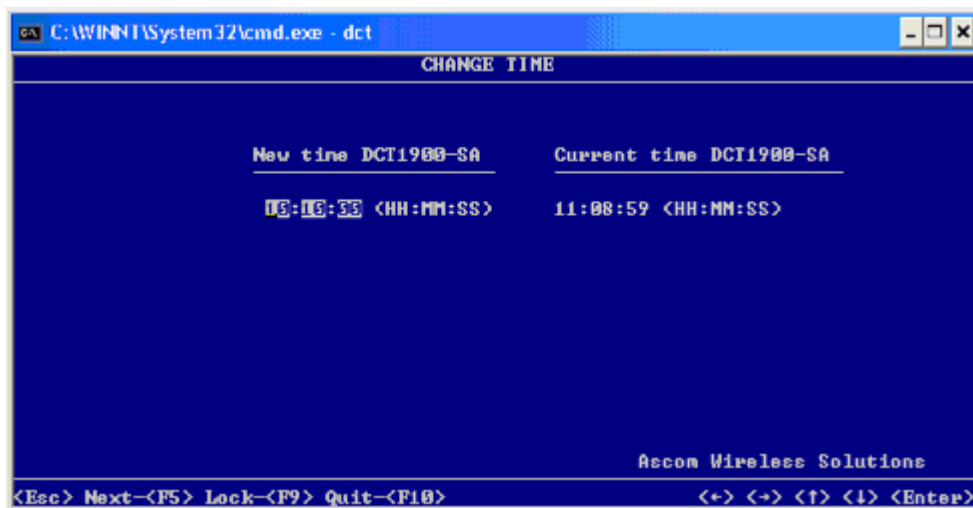
- Select Time/date

# Service Alert Bulletin

Product: DCT1900 Standalone & Mobility Server  
Purpose: Daylight Savings Time Adjustment  
Date: November 2, 2005



- Select time.
- This will pull the correct time from the PC. However, an adjustment maybe necessary.



- Press F5 to save.

**Note:** Power cycle (OFF/ON) the handsets for the changes to take in effect.

## Additional Information

For additional information, please contact the Ascom Technical Support team at 1-877-71ASC0M, Option 3.