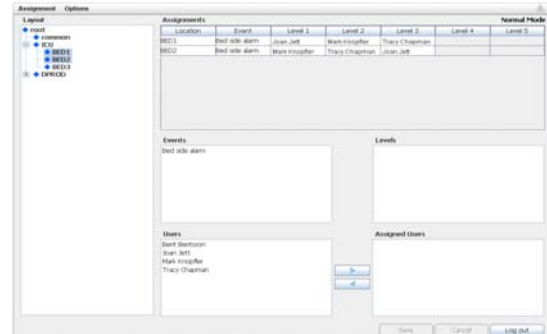


## Mobile Monitoring Gateway (MMG)

### Features

- Smart interface to the GE CARESCAPE™ Network
- Provides messages to handsets and other notification devices
- Powerful, dynamic action handler for advanced notification rules
- Duty assignments – flexible for optimal resource utilization
- Runs on highly secure, solid state, embedded hardware
- Web-based Graphical User Interface
- Scalable
- Configurable hierarchy of patient monitoring equipment
- Configurable assignment of users per patient monitor and escalation level



### Technical Specifications

#### Hardware Specification

ELISE2 / 64 MB RAM / 256 MB FLASH For technical specifications refer to Data Sheet for ELISE2 Hardware TD 92524GB

#### Client PC Requirements

Installation and administration: Windows® Internet Explorer® 8.0 or later  
Sun™ Java™ Runtime Environment (JRE) 6 or later

Screen resolution: Min. 1024 x 768 pixels

#### Language

Installation GUI: English only

Operational GUI: English as standard, translations can be added

#### Supported interface (in)

CARESCAPE Network A patient monitoring network used by GE Healthcare

### **Supported GE Healthcare equipment**

Dash® 3/4/5000	5.2 through 6.8
Solar® 9500	4C or earlier
Solar 8000M/i	5.3 or earlier
ApexPro®	4.1 or earlier
CDT-LAN	6D
GE DINAMAP® PRO 1000	V2 RAK or earlier V3 RAF or earlier
Eagle 3000	3B or later
Eagle 4000	5B or later
Solar 7_8000	7C or earlier
Tramscope	17H or earlier
Unity Network® ID	5C or earlier
Dash 2000	3B or earlier
Octacomm	2E or earlier
CARESCAPE Monitor B850	V1.0
Dash 2500	RAL

*Please contact GE Healthcare to determine if more recent versions of these products are compatible and have been released.*

### **Variants**

FE2-D1ABA1	MMG Standard, includes hardware, power supply, standard license supporting the CARESCAPE Network interface, 50 monitors and a single Duty Assignment client
FE2-D1AL1	Standard license supporting the CARESCAPE Network interface, 50 monitors and a single Duty Assignment client

### **Additional License options**

FE2-D1ALLOC	License, Monitor location license pack (in steps of 50)
FE2-D1ALDAC	License, Duty Assignment Client license (in steps of 1)

*Specifications are subject to change without notice.*

## License Specifications

### MMG Standard - FE2-D1ABA1 / FE2-D1AL1

Action Handler:	Paging Interactive Messaging Digital outputs activation Escalations
Duty Assignment:	Up to 50 locations (patient monitors) One (1) duty assignment client connection Allows escalation of pagers between up to 5 (default 3) sets of users Unassigned event warning
Time sources:	NTP server (NTPv4 compatible with NTPv2 and NTPv3) Time can be set manually from a web browser

### Performance

Message latency <sup>1</sup> :	Typically 1 to 2 sec. during normal conditions, incl. Duty Assignment configuration Up to 10 sec. during the save of the Layout Setup or synchronization of the database in Action Configuration (<100 events) Up to 30 sec. during synchronization of a database with 300 events
Capacity:	6 000 messages (pagers) per hour Max. 80 simultaneous actions <sup>2</sup> Max. 150 alarm broadcasts/sec

### MMG License, Monitor Location license pack - FE2-D1ALLOC

Max. no of locations	500 (in steps of 50)
----------------------	----------------------

### MMG License, Duty Assignment Client license - FE2-D1ALDAC

Max. no of simultaneous clients	25 (in steps of 1)
---------------------------------	--------------------

1. Defined as the time between when an alarm is received by the MMG and when the message is sent from the MMG

2. An Action results from the onset of an active monitor alarm, not filtered by the MMG, which generates a notification toward a caregiver.

*Specifications are subject to change without notice.*