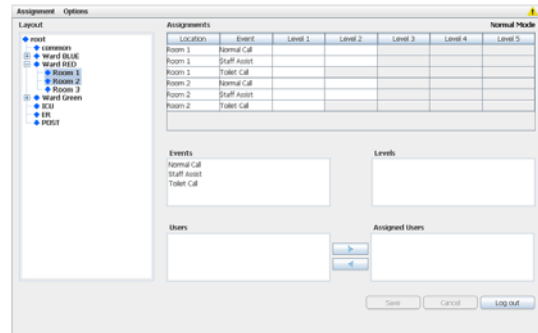


XGate

Features

- Event detection via several input alternatives
- Action Handler with powerful escalation function.
- Duty assignments – flexible for optimal resource utilization.
- Configurable location/process layout
- Powerful XML and ASCII input handling
- Support of HL7, version 2
- Support of TCP, UDP, HTTP as client, RS232 and digital inputs
- Support of ESPA, TAP & Ascom Line Protocol
- Fully Unite compatible for handling Unite events.
- Web based Graphical User Interface
- Expandable
- Support for sending email



Technical Specifications

Hardware Requirement

ELISE2 / 64 MB RAM / 256 MB FLASH or higher

For technical specifications refer to Data Sheet for ELISE2 Hardware TD 92524GB

PC Requirements

Installation and administration:

Microsoft Internet Explorer 6.0™ or later
Sun Java 1.5.0_06 or later (Java Runtime Environment version 5.0).

Screen resolution:

Min. 1024 x 768 pixels

Language

Installation GUI:

English only

Operational GUI:

Fully translatable, English as standard

Variants

XGate M1

XGate Basic, complete with ELISE2

XGate-L1

Licence for XGate Basic

XGate - Basic

Event input:

Digital physical inputs
System 900 (T942SI, T941AM etc.)
Unite¹
Input data conversion tables

Action Handler:

Paging, Interactive Messaging, digital outputs activation, escalations.

¹. Alarm and data from portables requires special licenses, for example MailGate, Netpage.

Time sources: System 900 A-bus
NTP server (NTPv4 compatible with NTPv2 and NTPv3)
Time can manually be set from a web browser

Additional Licence options

XGATE-LU1	Supports Duty Assignment configuration for 1 simultaneous user.
XGATE-LUM	Supports Duty Assignment configuration for up to 5 simultaneous users.
XGATE-LUX	Supports using Duty Assignment in other XGate
XGATE-LHC	Supports 100 Locations
XGATE-LHL	Supports 500 Locations
XGATE-LPA	Supports ASCII input data
XGATE-LPH	Supports HTTP client
XGATE-LPX	Supports XML input data
XGATE-LPSS	Supports Serial communication (ESPA/TAP/LP) for 1 port
XGATE-LPSM	Supports Serial communication (ESPA/TAP/LP) for multiple ports
XGATE-LA	Supports Unite personal Alarm
XGATE-LD	Supports Data from portables
XGATE-LI	Supports Unite Interactive Messaging to portables ¹
XGATE-LS	Supports Availability Subscription

Accessories (not included)

541479: Elise RS232 Cable, RJ45 to D-sub 9

Connections, I/O Ports (*Applies to the ELISE2 hardware with XGate software*)

3 serial ports:	RS232 (Modular jacks, RJ45) Used for: – ASCII input – serial communication (ESPA, TAP or Ascom line protocol) – remote management
1 serial port:	RS485 (Screw terminals or Modular jacks, RJ45) Used for System 900 A-bus.
LAN:	10baseT or 100baseT Ethernet (Modular jack, RJ45)
Error relay output:	Active when the relay operates or is released. Used for fault actions.
AUX outputs:	2 galvanically isolated open collector outputs. Used for fault actions.

System 900

Max. No. of A-bus modules² 15

¹. Only needed for the Event Handler.

². XGate used as bus controller in System 900, i.e. not connected to a Central Unit.

Specifications are subject to change without notice.

Options available for XGate

Duty Assignment:	Up to 500 locations Up to 5 simultaneous clients Up to 5 escalation levels Fully configurable location layout Fully configurable available users per location Unassigned event warning Duty Assignment in other XGate
ASCII Input:	Two way data support 3 TCP ports with up to 5 connections 3 UDP ports 3 HTTP connection settings 3 RS232 on the ELISE2 hardware Max. 5000 characters Multi characters start/stop conditions
Data Extractions:	Raw data monitoring Flexible extractions of relevant information from raw data Supports HL7 v2 Supports XML
Serial Communication:	Supports ESPA 4.4.4 protocol Supports Ascom Line protocol Supports TAP 1.8 protocol

Performance

Latency:	Typically 0.5 to 1 sec. during normal conditions, incl. Duty Assignment configuration. Up to 10 sec. during the save of the Layout Setup or synchronisation of the database in Action Configuration (< 100 events). Up to 30 sec. during synchronisation of a database with 300 events.
Capacity:	3000 messages per hour Max. 50 simultaneous actions Max. 300 events

Specifications are subject to change without notice.